

### Features:

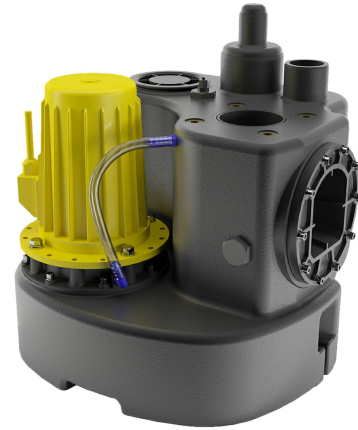
- polyethylene container with 55 litres capacity and up to 45 litres switching volume
- vortex pumps with high efficiency and low operation noise
- mechanical seal and shaft seal with intermediate oil chamber
- inlets: 3 x DN 100, 3 x DN 50, 1 x DN 50/100
- additional connections 1 ½" for manual diaphragm pump
- air vent DN 70 (Ø 75mm)
- operation temperature max. 55°C
- operating mode S3 - 25%
- protection grade IP 68 - fully submersible

### Application:

- pumping of domestic sewage from basement apartments, single-family houses or apartment buildings
- above-ground installation in frost-free rooms below the backflow level

### Scope of delivery:

- pre-assembled lifting unit with 3,5 m connection cable to the motor and 3,5 m pneumatic tube to the control with integrated non-return valve DN 100 (Kompaktboy 3,0-2P with external cast iron non-return valves)
- connection flange piece DN 100 for pressure pipe (DN 80 optional)
- flexible connection with tension clamps for pressure pipe and ventilation pipe
- incl. ZPS1: comfortable, pneumatic level control with microcontroller, LCD plain text display for filling level, maintenance, operating hours, fault message and alarm signal in switchbox for indoor installation



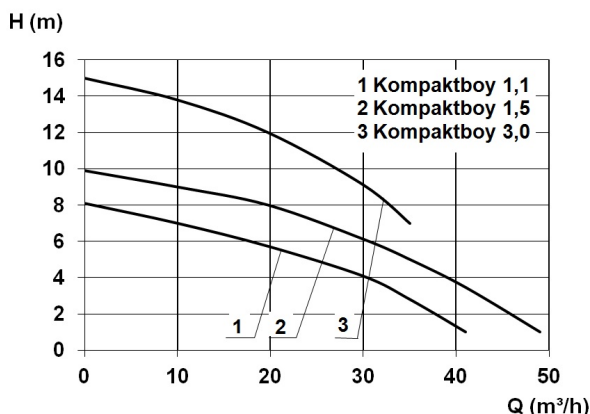
### Product benefits:

- compact dimensions; space-saving contribution even through manhole opening (60 cm)
- pre-assembled - connection pieces, non-return valve integrated (except 3kW)
- comfort control unit included in delivery
- high delivery heads
- integrated pressure measurement for mm-precise switch points
- all-side connections for easy installation in cramped rooms

### Technical data:

Art.no.	U [V]	P <sub>1</sub> [W]	P <sub>2</sub> [W]	In [A]	n [min <sup>-1</sup> ]	Q <sub>max</sub> [m <sup>3</sup> /h]	H <sub>max</sub> [m]	SH [mm]	PO	L [mm]	W [mm]	H [mm]	Weight [kg]
10440	400	1.400	1.100	2,9	1400	41,0	8,1	50	DN 100	564	540	576	43

### Characteristics:



### Materials:

Seal motor:	shaft seal
Seal pump:	mechanical seal

**Dimensions:**

